

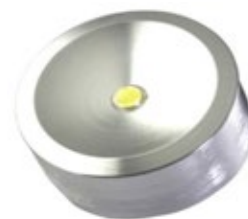
CABINET LIGHTS DL6 SERIE

FEATURES

- 6pcs under cabinet light can be connected in series (not in parallel), but it is limited by the max power consumption of the constant current LED driver.
- Input voltage: 12V DC
- Input current: constant current 350mA
- Power consumption: 1W
- CRI>80

APPLICATIONS:

- Kitchen Lighting
- Cabinet Lighting
- Furniture Lighting
- Display Case Lighting
- Jewelry Store, Museum, Wall Way
- Hotel, Restaurant,
- Accent Lighting
- Entertainment Places



See chart below for more details

DETAILS BY MODEL

MODEL	POWER	LUMINOUS FLUX	TEMPERATURE	LED	BEAM ANGLE	VOLTAGE
DL6-E3W-WW	1W	WW: 70 lm	WW 2800K - 3300K CW 6000K- 6500K	EDISON LED	120°	12VDC
DL6-E3W-CW		CW : 80 lm				